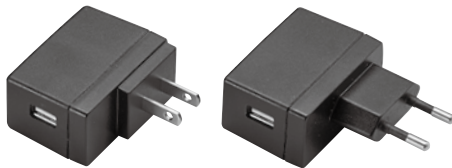


Vertical (USB & SR Type)



Horizontal (USB & SR Type)



Features

- DoE Compliance
- RoHS Compliance
- Over Voltage Protective Installation
- Short Circuit Protective Installation
- Protection Type: Auto Recovery
- MTBF > 100,000 hours

EM1012 x Y Z T-vv PP

- x:** Output range
Y: Case type (V)Vertical or (H)Horizontal to denote different enclosure
Z: AC plug type: • U: USA • E: EU • K: UK
T: Output type U (USB), S (SR)
vv: Specified output voltage, ie 12 is 12Vdc.
PP: Connector type, ie 01 for EDACPOWER standard dc cable or please refer to the appendix page

Electrical Specifications

MODEL No.	MAX. OUTPUT POWER (W)	OUTPUT VOLTAGE (Vo)	MIN. LOAD (Io)	MAX. LOAD (Io)	LOAD REGULATION	LINE REGULATION	RIPPLE & NOISE
EM1012A	12W	5~8V	0A	2.4A	± 5%	± 1%	100mV
EM1012B	12W	9~11V	0A	1.33A	± 5%	± 1%	180mV
EM1012C	12W	12~17V	0A	1.0A	± 5%	± 1%	250mV
EM1012D	12W	18~24V	0A	0.66A	± 5%	± 1%	350mV

NOTE:

- 1 : Ripple & Noise is measured by using 20MHz bandwidth limited oscilloscope and terminated each output with a 0.1uf ceramic capacitor & parallel with 47uf aluminum capacitor at full load and nominal line.
- 2 : Line regulation is defined by changing ±10% of input voltage from nominal line at rated load.
- 3 : Max. Power (W) = Vo x Io

Electrical Specifications

INPUT

- Input Range 100 to 240VAC
- Frequency 50 to 60Hz
- Input Current ≤1.0A ~ 0.5A
- Inrush Current ≤60A
- Efficiency Meet CEC LEVEL VI (DoE)
- Hold Up Time ≥8.3mS
- Turn On Time ≤3S

OUTPUT

- Over Voltage Protection Auto Recovery
- Over Current Protection Auto Recovery
- Short Circuit Protection Auto Recovery

ENVIRONMENTAL

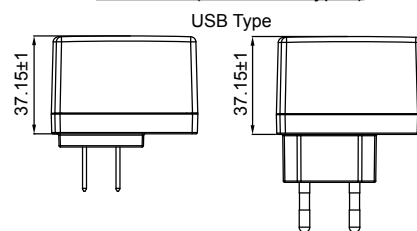
- Operating Temperature 0 to 40°C
- Storage Temperature -20 to 85°C
- Operating Humidity 10% to 90%
- Storage Humidity 5% to 95%

SAFETY

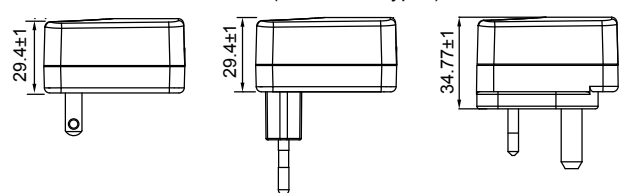
- UL/cUL, UL60601, TUV EN60601, CB 60601, CE, FCC

Mechanical Specification

Horizontal (USB & SR Types)



Vertical (USB & SR Types)



- Case Size: Horizontal: USB: 55.6L x 27.1W x 37.15H (mm)
SR: 55L x 25W x 36.7H (mm)
Vertical: USA, EU: 53.46L x 41W x 29.4H (mm)
UK: 53.46L x 41W x 34.77H (mm)
- AC Plug: • K: UK Pin • U: USA Pin • E: EU Pin
- Weight: 70g