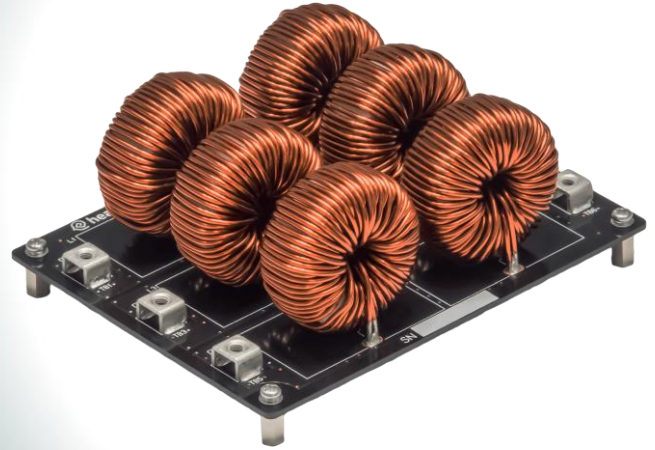


High-Frequency Reactor Board

HHLB-3A-181200



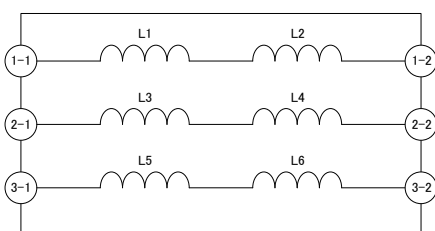
Abstract

- 3-line Reactor Board
- Applicable for inverter output filter, interconnection reactor of grid-tied inverter, averaging reactor for DCDC converter
- Compatible to Headspring SiC/GaN Circuit Block and SiC Three Phase Inverter

Features

- **Liqualloy™ Core on Board**
- Advanced high-frequency characteristics over 100kHz class for SiC/GaN application
- Superior DC superimposition characteristics
- Low Core-loss and high tolerance against current ripple

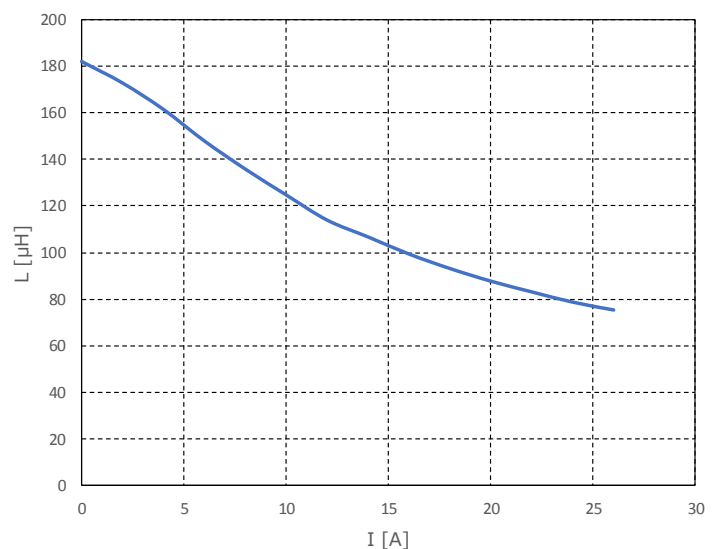
Block Diagram



Specification

| Subject | Specification | Notes |
|-----------------------|---------------------------------|---------------------------|
| Size | W 126 mm D 100 mm H 50 mm | Excluding protuberance |
| No of Line | 3 Lines | |
| Maximum Current | 20 A | |
| Inductance (per line) | 182μH (Typ.) | 100kHz 10mA, Zero DC Bias |

DC superimposition characteristics



As of June/2017

* Specifications and Design are subject to change without notice.